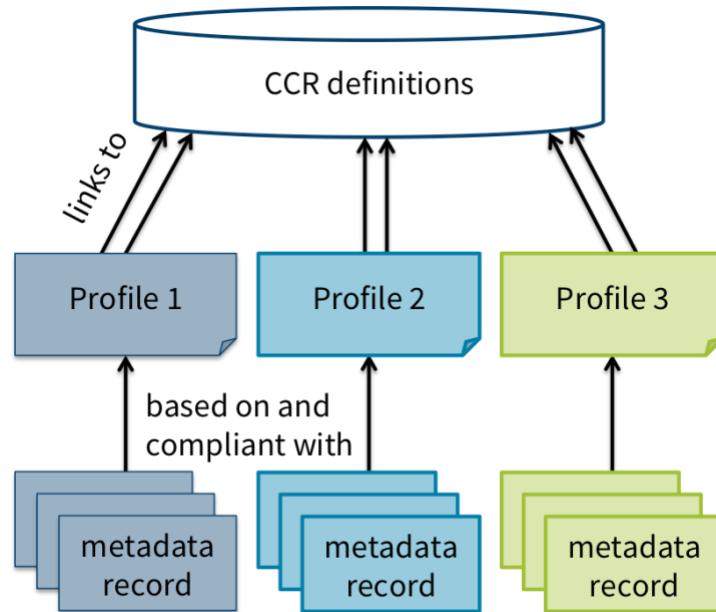




First Aid Kit

Version 3
October 2018

The CMDI model



CMDI 1.2 specification: <https://www.clarin.eu/cmd1.2-specification>

CMDI best practices: <https://www.clarin.eu/cmd1-best-practices>

Tools for a CMD Modeller

- List of recommended components:
 - www.clarin.eu/faq/there-list-recommend-components-and-profiles
- Get a grip on the differences between components and profiles in the SMC Browser:
 - clarin.oeaw.ac.at/exist/apps/smc-browser
- Create, if needed, your own components and profiles in the Component Registry:
 - www.clarin.eu/componentregistry
 - Interact with your national CMDI and CCR coordinator(s) to construct and use good quality components, profiles and concepts:
 - www.clarin.eu/ccr
 - Inspect common vocabularies in the CLARIN Vocabulary Service or suggest the creation of new vocabularies:
 - vocabularies.clarin.eu
- Assess the quality of your profiles and components:
 - clarin.oeaw.ac.at/curate
- Inspect if the VLO can find its facets in your profiles:
 - vlo.clarin.eu/mapping

Tools for a CMD Creator or Curator

- Create your CMD records via:
 - Your own specific transformations, continue to validation
 - Your own specific forms, continue to validation
 - Get inspired by the CMDI Maker:
cmdi-maker.uni-koeln.de
 - ...or Coala, which converts (fixed) table structures into CMDI:
clarin.phonetik.uni-muenchen.de/BASWebServices/#!/services/Coala
 - Use a generic CMDI editor:
 - COMEDI: clarino.uib.no/comedi
 - Arbil: tla.mpi.nl/tools/arbil
 - Use a generic XML editor:
 - For example, oXygen:
www.oxygenxml.com
- Always validate your CMD records:
 - CMDI Validator:
github.com/clarin-eric/cmd-instance-validator
 - SchemAnon:
github.com/TheLanguageArchive/SchemAnon
 - Any generic XML editor that supports XSD validation, e.g., oXygen
 - xmllint --schema: available for most systems

Tools for a CMD Provider

- Provide your CMD records for harvesting:
 - ...by the OAI provider supplied by your repository
 - For example, Fedora Commons can provide CMD records via Proai¹
 - ...or directly from the file system
 - We have good experiences with jOAI:
uc.dls.ucar.edu/joai
- Register your endpoint in the CLARIN Centre Registry:
centres.clarin.eu
- Inspect the harvesting results at:
vlo.clarin.eu/oai-harvest-viewer
- And see the records appear in the VLO 😊
vlo.clarin.eu

¹ <http://proai.sourceforge.net/>

And for all the CMDI questions you never dared to ask:

clarin.eu/cmdi

clarin.eu/faq

cmdi@clarin.eu

trac.clarin.eu/wiki/Taskforces/CMDI²

² Requires a CLARIN developers account – see <https://www.clarin.eu/dev>