

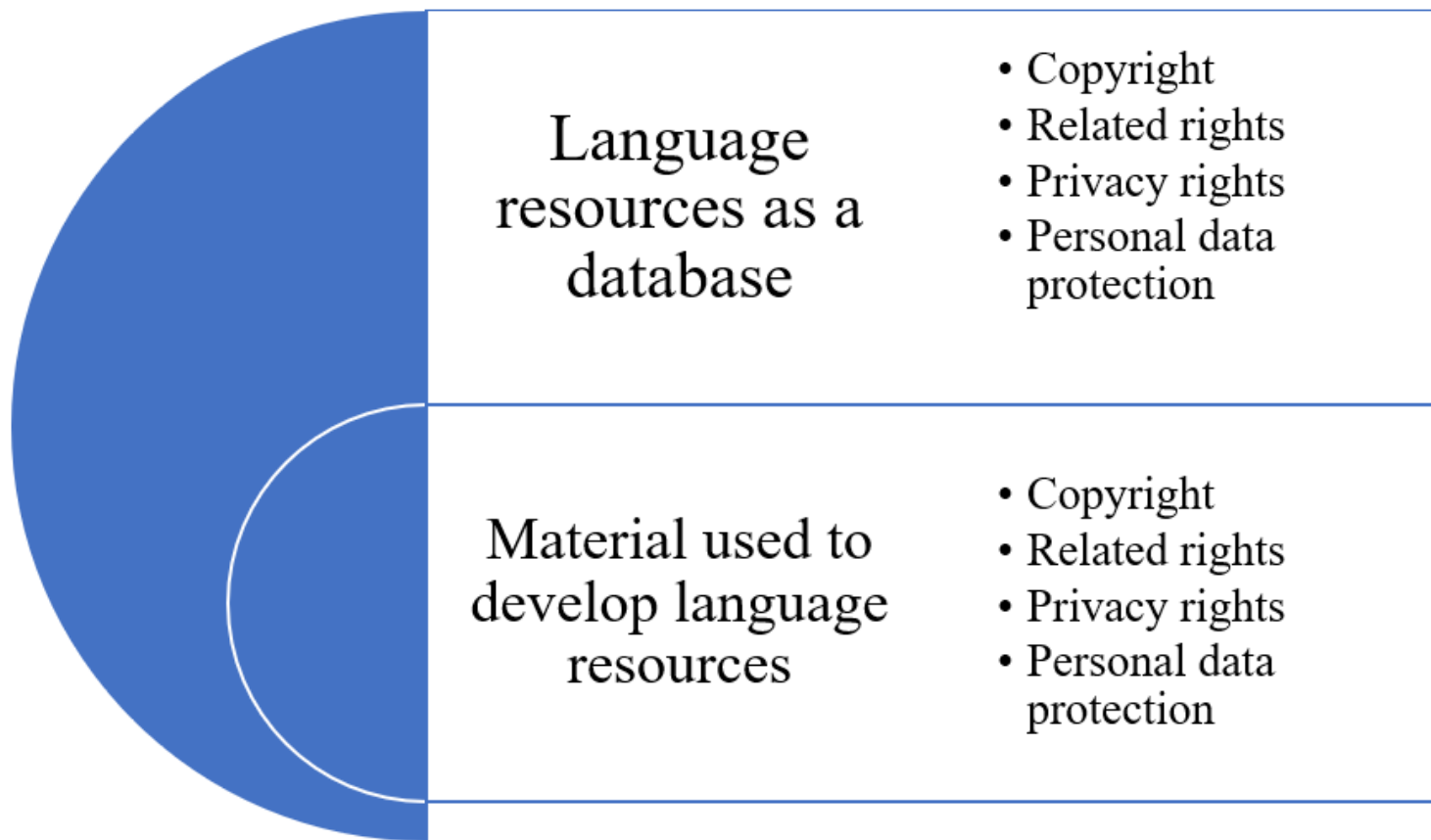


TARTU ÜLIKOOL

# Processing personal data without the consent of the data subject for the development and use of language resources

Aleksei Kelli, Krister Lindén, Kadri Vider, Pawel Kamocki, Ramūnas Birštonas, Silvia Calamai, Chiara Kolletzek, Penny Labropoulou, Maria Gavriilidou

# Rights covering language resources (LRs):



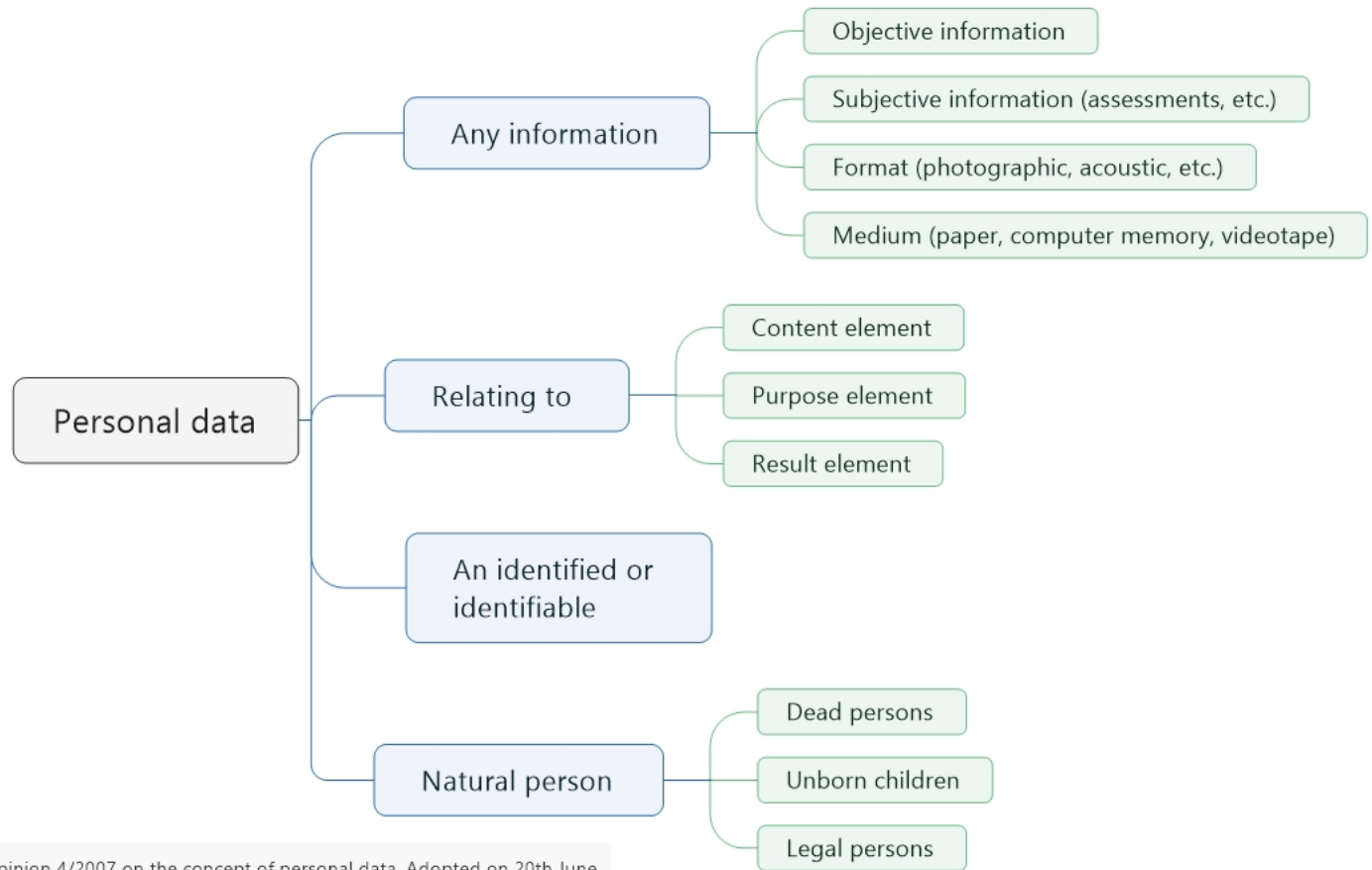
Language resources as a database

- Copyright
- Related rights
- Privacy rights
- Personal data protection

Material used to develop language resources

- Copyright
- Related rights
- Privacy rights
- Personal data protection

# LRs and personal data:



Opinion 4/2007 on the concept of personal data. Adopted on 20th June



# LRs and personal data:

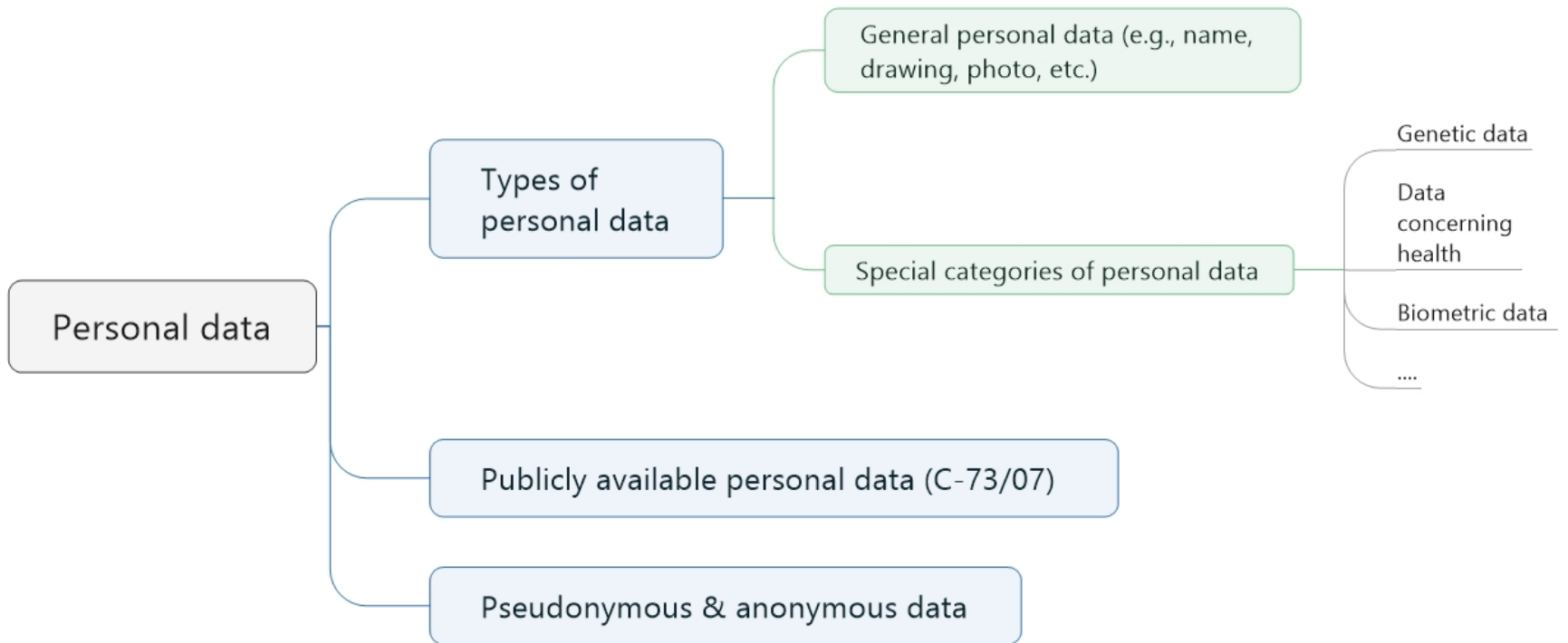
Identifiable natural person  
(Material  
scope of the GDPR)

Absolute approach  
(all possibilities to  
identify the data  
subject)

Relative approach  
(realistic efforts to  
identify the data subject)

G. Spindler, P. Schmechel (2016). Personal Data and Encryption in the European General Data Protection Regulation. - JIPITEC 7 (2)

# LRs and personal data:





# LRs and personal data:

Special categories of personal data

Data concerning health

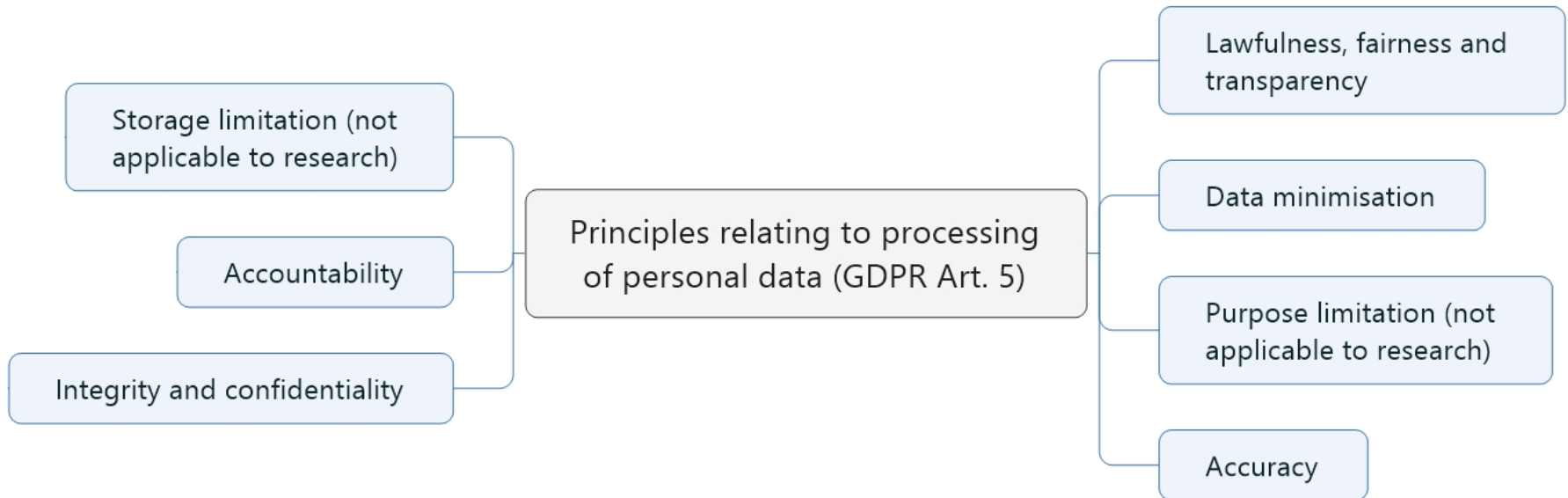
Biometric data for the purpose of uniquely identifying a natural person





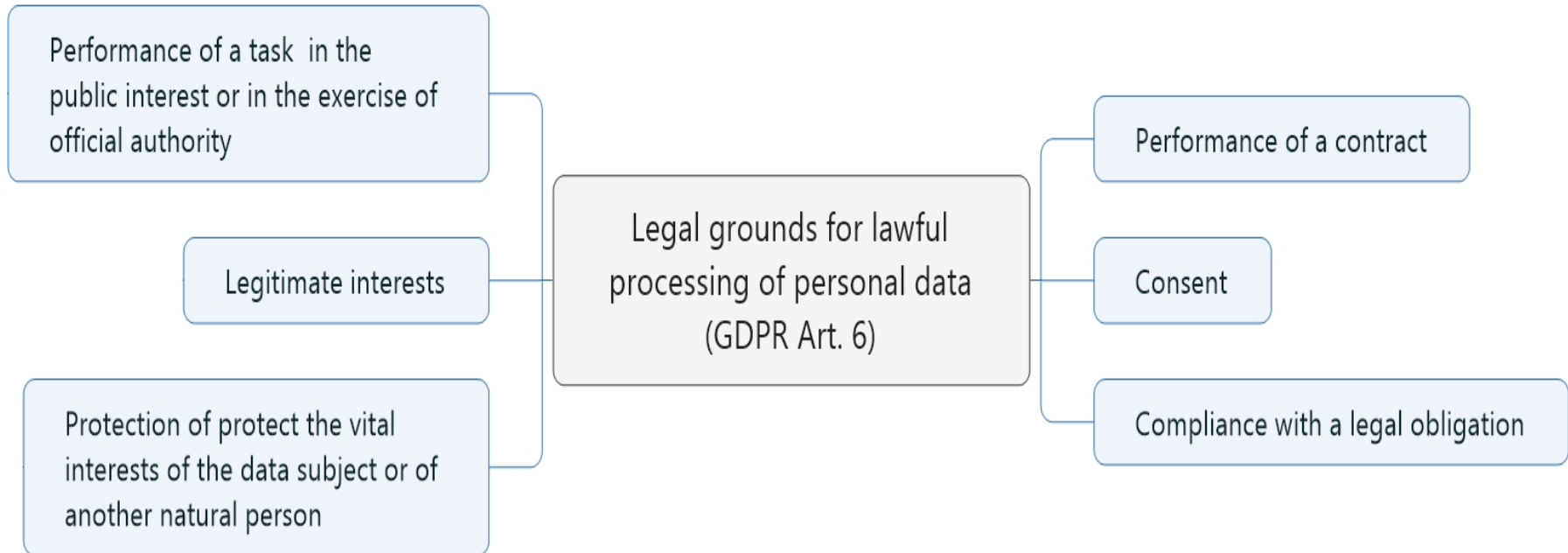


# Processing personal data:



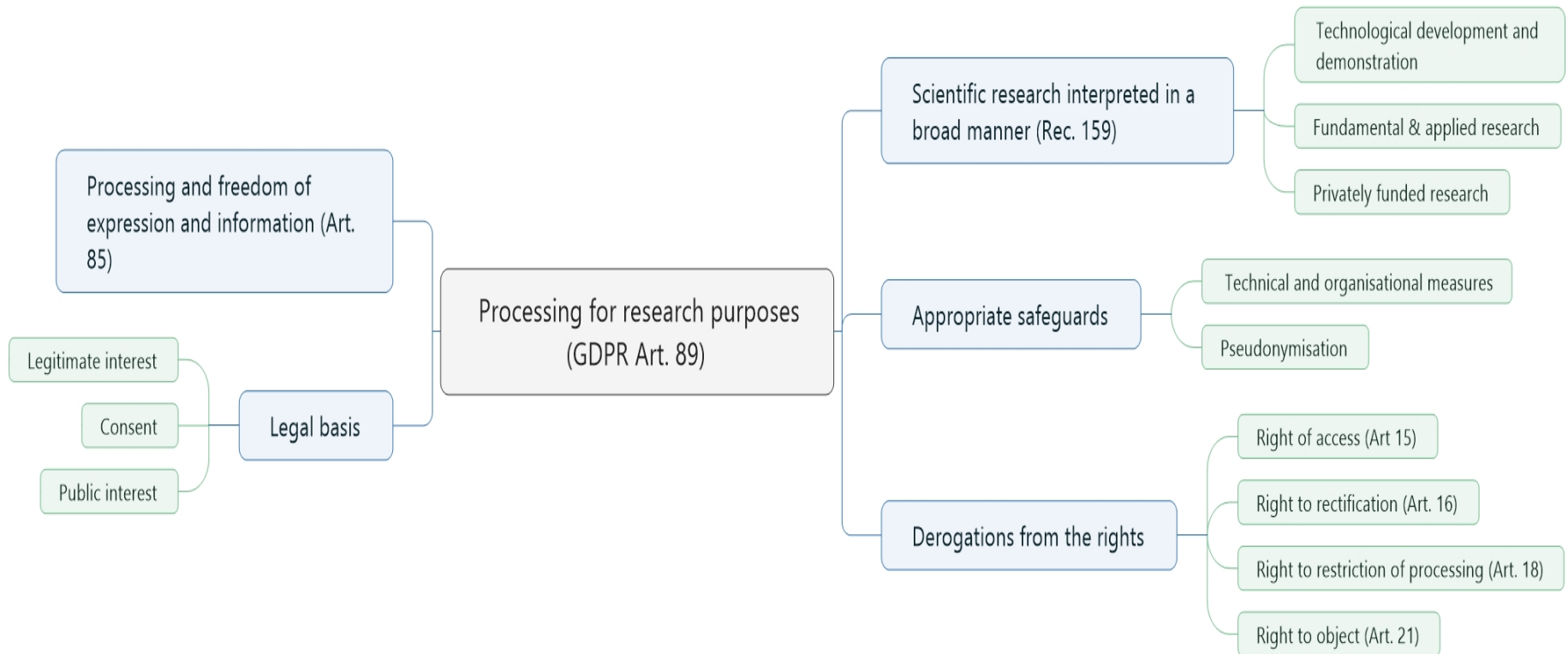


# Processing personal data:





# Processing personal data:





*Nemo plus iuris transfere (ad alium) potest quam ipse habet*

Ulpianus



TARTU ÜLIKOOL

# Täna

[aleksei.kelli@ut.ee](mailto:aleksei.kelli@ut.ee)